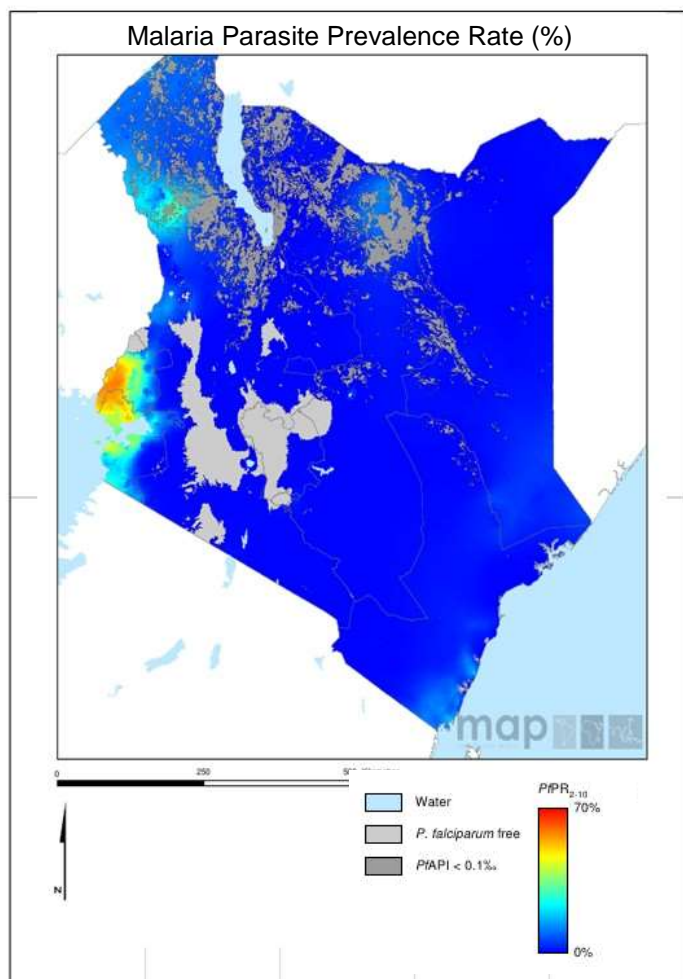


## Scorecard for Accountability and Action



Malaria transmission in Kenya ranges from intense in lowland areas to unstable epidemic-prone in the highlands. The annual reported number of malaria cases in 2016 was 8,322,500 with 603 deaths.

### Metrics

Commodities Financed and Financial Control		
LLIN financing 2018 projection (% of need)	100	
Public sector RDT financing 2018 projection (% of need)	100	
Public sector ACT financing 2018 projection (% of need)	100	
World Bank rating on public sector management and institutions 2017 (CPIA Cluster D)	3.4	
Insecticide Resistance Monitoring, Implementation and Impact		
Insecticide classes with mosquito resistance in representative sentinel sites confirmed since 2010	4	
Insecticide resistance monitored since 2015 and data reported to WHO		
National Insecticide Resistance Monitoring and Management Plan		
Scale of Implementation of iCCM (2017)		
Operational LLIN/IRS coverage (% of at risk population)	99	
Reduced Malaria Incidence by >40% by 2020 (vs 2015) (projected)		
Tracer Indicators for Maternal and Child Health and NTDs		
Mass Treatment Coverage for Neglected Tropical Disease (NTD index, %)(2016)	43	
Estimated % of Total Population living with HIV who have access to antiretroviral therapy (2017)	75	▲
Estimated % of children (0–14 years old) living with HIV who have access to antiretroviral therapy (2017)	82	▲
% deliveries assisted by skilled birth attendant	62	
Postnatal care (within 48 hrs)	53	
Exclusive breastfeeding (% children < 6 months)	61	
Vitamin A Coverage 2016 (2 doses)	41	
DPT3 coverage 2017 (vaccination among 0-11 month olds)	82	

### Key

<span style="background-color: #90EE90; border: 1px solid black; display: inline-block; width: 20px; height: 10px;"></span>	Target achieved or on track
<span style="background-color: #FFFF00; border: 1px solid black; display: inline-block; width: 20px; height: 10px;"></span>	Progress but more effort required
<span style="background-color: #FF0000; border: 1px solid black; display: inline-block; width: 20px; height: 10px;"></span>	Not on track
<span style="background-color: #A9A9A9; border: 1px solid black; display: inline-block; width: 20px; height: 10px;"></span>	No data
<span style="background-color: #FFFFFF; border: 1px solid black; display: inline-block; width: 20px; height: 10px;"></span>	Not applicable

## **Malaria**

### **Progress**

Kenya has secured the resources required to sustain universal coverage of essential malaria control interventions in 2018. The country has carried out insecticide resistance monitoring since 2015 and has reported the results to WHO. Kenya has a high rating in terms of public sector management systems (CPIA cluster D). Kenya has completed the national insecticide resistance monitoring and management plan. The country is implementing iCCM. The country has significantly enhanced the tracking and accountability mechanisms for malaria with the development of a Malaria Control and Elimination Scorecard.

### **Impact**

The annual reported number of malaria cases in 2016 was 8,322,500 with 603 deaths.

### **Key Challenge**

- The reduced allocation for malaria from the Global Fund.

## **MNCH and NTDs**

### **Progress**

Kenya has achieved high coverage of the tracer MNCH intervention exclusive breastfeeding and has recently increased coverage of ARTs. The country has significantly enhanced the tracking and accountability mechanisms with the development of a Reproductive, Maternal, Newborn, Child and Adolescent Health Scorecard.

Progress in addressing Neglected Tropical Diseases (NTDs) in Kenya is measured using a composite index calculated from preventive chemotherapy coverage achieved for lymphatic filariasis, schistosomiasis, soil transmitted helminths and trachoma. Preventive chemotherapy coverage in Kenya is 60% for lymphatic filariasis, 42% for schistosomiasis and 60% for soil transmitted helminths. Coverage is low for trachoma (23%). Overall, the NTD preventive chemotherapy coverage index for Kenya in 2016 is 43, which represents a substantial increase compared with the 2015 index value (22).