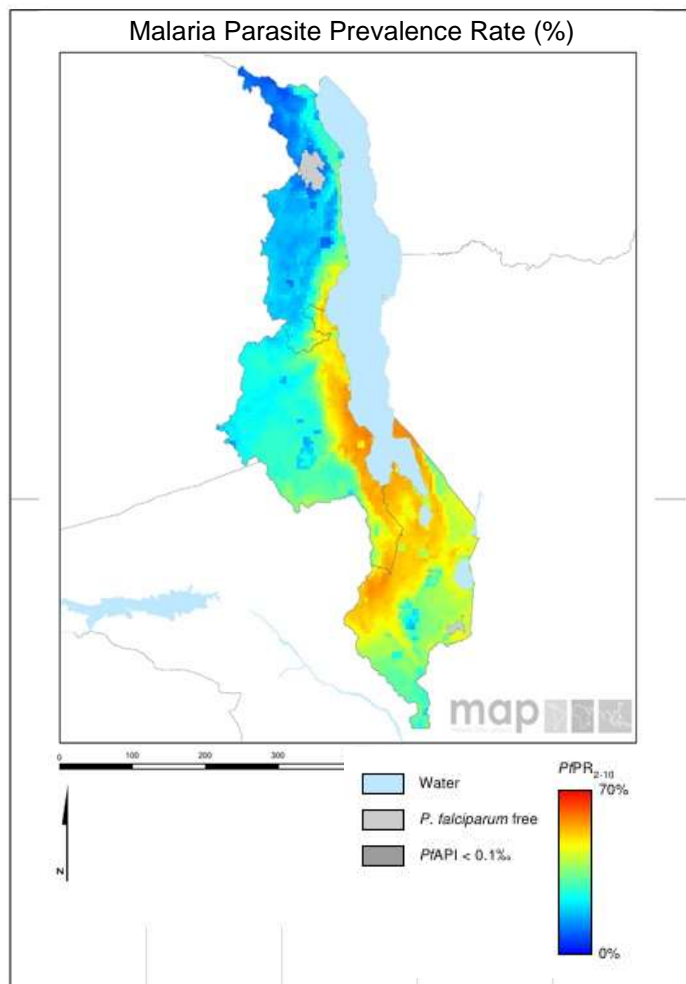


Scorecard for Accountability and Action



Malawi is endemic in all parts of Malawi. The annual reported number of malaria cases in 2015 was 4,933,416 with 3,799 deaths.

Metrics

Commodities Financed and Financial Control		
LLIN financing 2017 projection (% of need)	100	
Public sector RDT financing 2017 projection (% of need)	100	
Public sector ACT financing 2017 projection (% of need)	100	
World Bank rating on public sector management and institutions 2015 (CPIA Cluster D)	3.1	
Insecticide Resistance Monitoring, Implementation and Impact		
Insecticide classes with mosquito resistance in representative sentinel sites confirmed since 2010	3	
Insecticide resistance monitored since 2014 and data reported to WHO		
National Insecticide Resistance Monitoring and Management Plan		
Scale of Implementation of iCCM (2016)		
Operational LLINIRS coverage (% of at risk population)	100	
Estimated change in malaria incidence rate (2010–2015)		
Estimated change in malaria mortality rate (2010–2015)		
Tracer Indicators for Maternal and Child Health		
Estimated % of Total Population living with HIV who have access to antiretroviral therapy (2015)	61	
Estimated % of children (0–14 years old) living with HIV who have access to antiretroviral therapy (2015)	61	
% deliveries assisted by skilled birth attendant	90	
Postnatal care (within 48 hrs)	39	
Exclusive breastfeeding (% children < 6 months)	61	
Vitamin A Coverage 2014 (2 doses)	41	
DPT3 coverage 2015 (vaccination among 0-11 month olds)	88	

Key

	Target achieved or on track
	Progress but more effort required
	Not on track
	No data/Not applicable

Malaria

Progress

Malawi has secured sufficient resources to finance the ACTs, RDTs and LLINs required for 2017. Sufficient LLINs have been procured to achieve 100% operational coverage of LLINs. Malawi has scaled up iCCM. Malawi has carried out insecticide resistance monitoring since 2014 and has reported the results to WHO. The country has also developed an insecticide resistance monitoring and management plan.

Impact

The annual reported number of malaria cases in 2015 was 4,933,416 with 3,799 deaths. WHO estimates that the country has achieved a decrease of greater than 40% in the malaria incidence rate and a decrease of 20-40% in the malaria mortality rate for the period 2010 - 2015.

Previous Key Recommended Action

Objective	Action Item	Suggested completion timeframe	Progress	Comments - key activities/accomplishments since last quarterly report
Address funding	Ensure the GF malaria funding application is submitted by Q2 2017 and ensure that resources are allocated to malaria control at a level that is sufficient to sustain the gains made in recent years	Q2 2017		Deliverable not yet due but the country has commenced work on the GF funding application. Resources were allocated to malaria control at a level that is sufficient to sustain the gains made in recent years

MNCH

Progress

High coverage has also been obtained for the tracer MNCH interventions, including coverage of skilled birth attendants and exclusive breastfeeding. Malawi has significantly enhanced the tracking and accountability mechanisms with the development and launch of the Reproductive, Maternal, Newborn and Child Health Scorecard.

Previous Key Recommended Actions

Malawi has responded positively to the MNCH recommended actions addressing low coverage of postnatal care and continues to track progress as these actions are implemented.

Key

	Action achieved
	Some progress
	No progress
	Deliverable not yet due