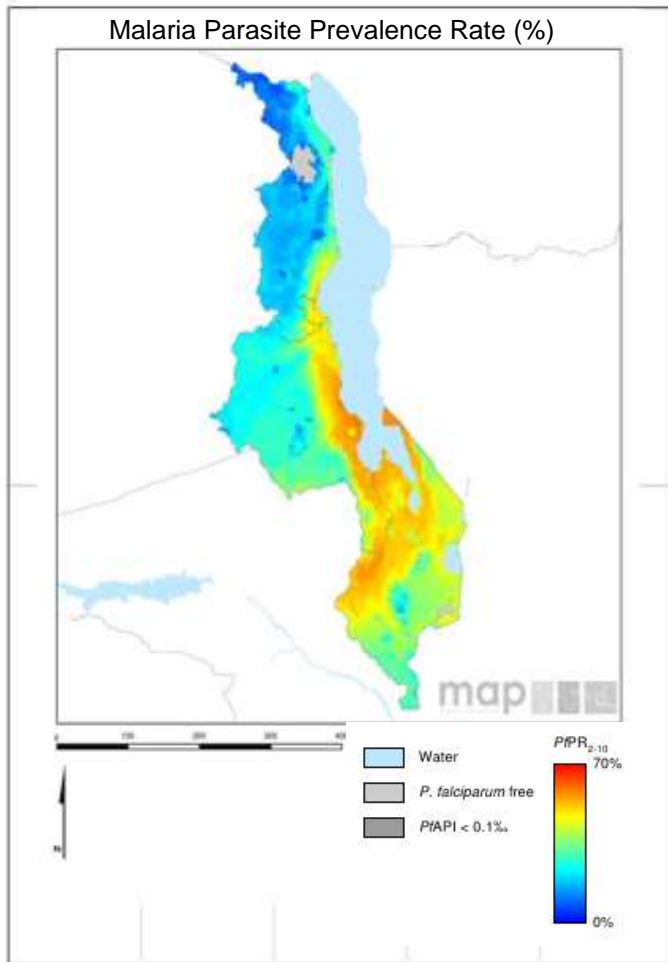


Scorecard for Accountability and Action



Malaria is endemic in all parts of Malawi. The annual reported number of malaria cases in 2016 was 5,165,386 with 4,000 deaths.

Metrics

Commodities Financed and Financial Control	
LLIN financing 2018 projection (% of need)	100
Public sector RDT financing 2018 projection (% of need)	100
Public sector ACT financing 2018 projection (% of need)	100
World Bank rating on public sector management and institutions 2017 (CPIA Cluster D)	3.2
Insecticide Resistance Monitoring, Implementation and Impact	
Insecticide classes with mosquito resistance in representative sentinel sites confirmed since 2010	3
Insecticide resistance monitored since 2015 and data reported to WHO	
National Insecticide Resistance Monitoring and Management Plan	
Scale of Implementation of iCCM (2017)	
Operational LLIN/IRS coverage (% of at risk population)	100
Reduced Malaria Incidence by >40% by 2020 (vs 2015) (projected)	
Tracer Indicators for Maternal and Child Health and NTDs	
Mass Treatment Coverage for Neglected Tropical Disease (NTD index, %)(2016)	89
Estimated % of Total Population living with HIV who have access to antiretroviral therapy (2017)	▲ 71
Estimated % of children (0–14 years old) living with HIV who have access to antiretroviral therapy (2017)	▲ 63
% deliveries assisted by skilled birth attendant	90
Postnatal care (within 48 hrs)	42
Exclusive breastfeeding (% children < 6 months)	59
Vitamin A Coverage 2016 (2 doses)	▲ 91
DPT3 coverage 2017 (vaccination among 0-11 month olds)	88

Key

	Target achieved or on track
	Progress but more effort required
	Not on track
	No data
	Not applicable

Malaria

Progress

Malawi has secured sufficient resources to finance the ACTs, RDTs and LLINs required for 2018. Sufficient LLINs have been procured to achieve 100% operational coverage of LLINs. Malawi has scaled up iCCM. Malawi has carried out insecticide resistance monitoring since 2015 and has reported the results to WHO. The country has also developed an insecticide resistance monitoring and management plan. Malawi has significantly enhanced the tracking and accountability mechanisms for malaria with the development of the Malaria Control Scorecard.

Impact

The annual reported number of malaria cases in 2016 was 5,165,386 with 4,000 deaths.

MNCH and NTDs

Progress

High coverage has been obtained for the tracer MNCH interventions, skilled birth attendants and exclusive breastfeeding. The country has recently increased coverage of vitamin A and ARTs. Malawi has significantly enhanced the tracking and accountability mechanisms with the development and launch of the Reproductive, Maternal, Newborn and Child Health Scorecard.





Progress in addressing Neglected Tropical Diseases (NTDs) in Malawi is measured using a composite index calculated from preventive chemotherapy coverage achieved for lymphatic filariasis, onchocerciasis, schistosomiasis, soil transmitted helminths and trachoma. Preventive chemotherapy coverage in Malawi is high for lymphatic filariasis (100%), onchocerciasis (83%), schistosomiasis (96%), soil transmitted helminths (88%), and trachoma (79%). Overall, the NTD preventive chemotherapy coverage index for Malawi in 2016 is 89, which represents a slight increase compared with the 2015 index value (84).

Previous Key Recommended Action

Objective	Action Item	Suggested completion timeframe	Progress	Comments - key activities/accomplishments since last quarterly report
MNCH ¹ : Optimise quality of care	Address the decreasing vitamin A coverage	Q4 2018		Deliverable not yet due but the country noted the decreasing coverage of vitamin A routine service coverage. In order to understand the factors associated with the decrease, a consultant has been engaged to investigate the trend, identify bottlenecks and recommend a way forward, however, the country reports that coverage increased in 2017 to 88%

¹ MNCH metrics, recommended actions and response tracked through WHO MCA

Key

	Action achieved
	Some progress
	No progress
	Deliverable not yet due