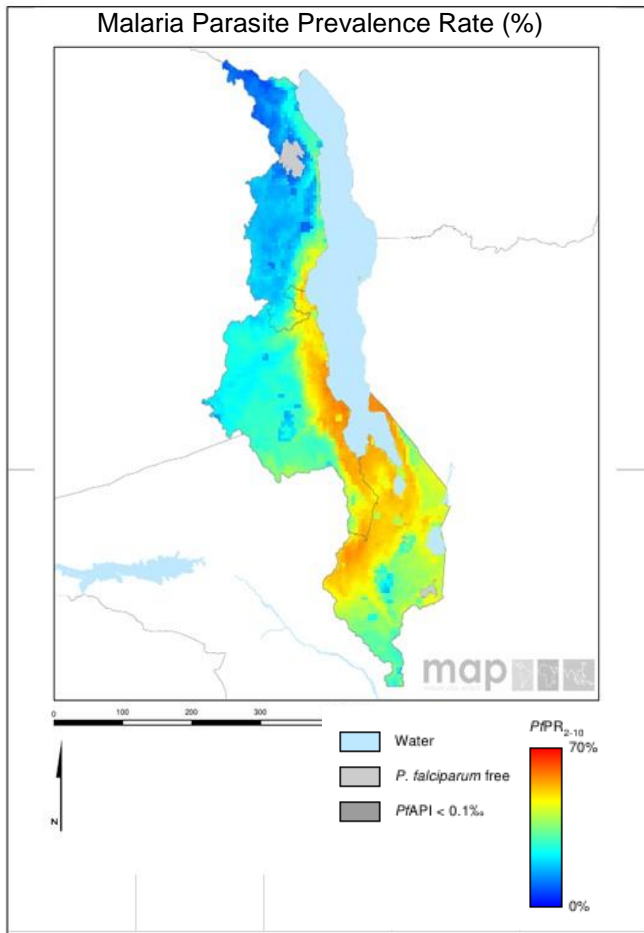


**Scorecard for Accountability and Action**



Malaria is endemic in all parts of Malawi. The annual reported number of malaria cases in 2017 was 5,936,348 with 3,613 deaths.

**Metrics**

Commodities Financed and Financial Control		
LLIN financing 2018 projection (% of need)	96	
Public sector RDT financing 2018 projection (% of need)	100	
Public sector ACT financing 2018 projection (% of need)	100	
World Bank rating on public sector management and institutions 2017 (CPIA Cluster D)	3.2	
Insecticide Resistance Monitoring, Implementation and Impact		
Insecticide classes with mosquito resistance in representative sentinel sites confirmed since 2010	4	
Insecticide resistance monitored since 2015 and data reported to WHO		
National Insecticide Resistance Monitoring and Management Plan		
Scale of Implementation of iCCM (2017)		
Operational LLIN/IRS coverage (% of at risk population)	100	
Change in Estimated Malaria Incidence(2010–2017)		
Change in Estimated Malaria Mortality rate(2010–2017)		
Tracer Indicators for Maternal and Child Health and NTDs		
Mass Treatment Coverage for Neglected Tropical Disease (NTD index, %)(2017)	91	
Estimated % of Total Population living with HIV who have access to antiretroviral therapy (2017)	71	
Estimated % of children (0–14 years old) living with HIV who have access to antiretroviral therapy (2017)	63	
% deliveries assisted by skilled birth attendant	90	
Postnatal care (within 48 hrs)	42	
Exclusive breastfeeding (% children < 6 months)	59	
Vitamin A Coverage 2016 (2 doses)	91	
DPT3 coverage 2017 (vaccination among 0-11 month olds)	88	

**Key**

<span style="background-color: #90EE90; border: 1px solid black; display: inline-block; width: 20px; height: 10px;"></span>	Target achieved or on track
<span style="background-color: #FFFF00; border: 1px solid black; display: inline-block; width: 20px; height: 10px;"></span>	Progress but more effort required
<span style="background-color: #FF0000; border: 1px solid black; display: inline-block; width: 20px; height: 10px;"></span>	Not on track
<span style="background-color: #A9A9A9; border: 1px solid black; display: inline-block; width: 20px; height: 10px;"></span>	No data
<span style="background-color: #FFFFFF; border: 1px solid black; display: inline-block; width: 20px; height: 10px;"></span>	Not applicable

## **Malaria**

### **Progress**

Malawi has secured sufficient resources to finance the ACTs, RDTs and the majority of the LLINs required for 2018. Sufficient LLINs have been procured to achieve 100% operational coverage of LLINs. Malawi has scaled up iCCM. Malawi has carried out insecticide resistance monitoring since 2015 and has reported the results to WHO. The country has also developed an insecticide resistance monitoring and management plan. Malawi has significantly enhanced the tracking and accountability mechanisms for malaria with the development of the Malaria Control Scorecard.

### **Impact**

The annual reported number of malaria cases in 2017 was 5,936,348 with 3,613 deaths.

## **MNCH and NTDs**

### **Progress**

High coverage has been obtained for the tracer MNCH interventions, skilled birth attendants, exclusive breastfeeding and vitamin A. Malawi has significantly enhanced the tracking and accountability mechanisms with the development and launch of the Reproductive, Maternal, Newborn and Child Health Scorecard.

Progress in addressing Neglected Tropical Diseases (NTDs) in Malawi is measured using a composite index calculated from preventive chemotherapy coverage achieved for lymphatic filariasis, onchocerciasis, schistosomiasis, soil transmitted helminths and trachoma. Preventive chemotherapy coverage in Malawi is high for lymphatic filariasis (100%), schistosomiasis (100%), trachoma (90%), onchocerciasis (86%) and soil transmitted helminths (82%). Overall, the NTD preventive chemotherapy coverage index for Malawi in 2017 is 91, which represents a slight increase compared with the 2016 index value (89).