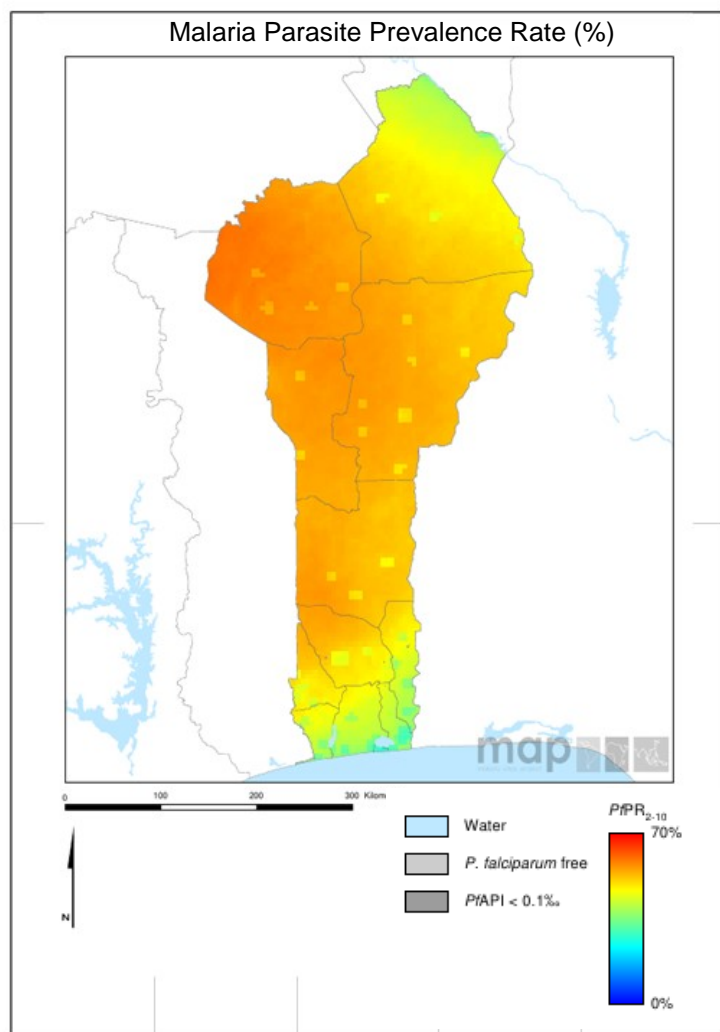


Scorecard for Accountability and Action



Malaria is endemic throughout Benin; however, transmission is more intense in the southern third of the country. The annual reported number of malaria cases in 2013 was 1,670,273 with 2,288 deaths.

Metrics

Policy and Financial Control	
Oral Artemisinin Based Monotherapy Ban status (2015)	Target achieved or on track
Community case management (Pneumonia)(2015)	Target achieved or on track
Community case management (Malaria)(2015)	Target achieved or on track
World Bank rating on public sector mgmt and institutions 2013 (CPIA Cluster D)	3.3
Commodities Financed, Implementation and Malaria Impact	
LLIN financing 2015 projection (% of need)	56
Public sector RDT financing 2015 projection (% of need)	100
Public sector ACT financing 2015 projection (% of need)	100
Operational LLIN/IRS coverage (% of at risk population)	100
On track in 2013 to Reduce Malaria Incidence by >75% by 2015 (vs 2000)	No data/Not applicable
Tracer Indicators for Maternal and Child Health	
PMTCT coverage 2013 (% pregnant HIV pts receiving ARVs)	45
% deliveries assisted by skilled birth attendant	84
Exclusive breastfeeding (% children < 6 months)	33
Vitamin A Coverage 2012 (2 doses)	99
DPT3 coverage 2013 (vaccination among 12-23 month olds)	69
Postnatal care (within 48 hrs)	49

Key

Target achieved or on track
Progress but more effort required
Not on track
No data/Not applicable

### Progress

Benin has made significant progress in malaria control policy, including banning the importation and sale of oral artemisinin-based monotherapies. Benin has introduced Community Case Management of malaria and pneumonia. The country has sufficient finances available to cover the 2015 requirements for ACTs and RDTs and has procured sufficient LLINs to achieve universal coverage. The country has also made good progress on tracer MNCH interventions, in particular increasing skilled birth attendants, vitamin A, and PMTCT coverage.

### Impact

The annual reported number of malaria cases in 2013 was 1,670,273 with 2,288 deaths.

### Key Challenges

- Securing longer-term finances for malaria control.
- Insecticide resistance threatens vector control effectiveness.

### Previous Key Recommended Action

Objective	Action Item	Suggested completion timeframe	Progress	Comments - key activities/accomplishments since last quarterly report
Address funding	Ensure the GF New Funding Model concept note is submitted by Q1 2015 and ensure that resources are allocated to malaria control at a level that is sufficient to sustain the gains made in recent years	Q1 2015		Benin submitted the GF New Funding Model concept note in April 2015

Benin has responded positively to the recommended action addressing low coverage of exclusive breastfeeding and continues to track progress as this action is implemented.

### New Key Recommended Action

Objective	Action Item	Suggested completion timeframe
MNCH <sup>1</sup> : Optimise quality of care	Identify and address reasons for decreasing DPT3 coverage	Q2 2016

### Key

	Action achieved
	Some progress
	No progress
	Deliverable not yet due

<sup>1</sup> MNCH metrics, recommended actions and response tracked through WHO MCA/iERG