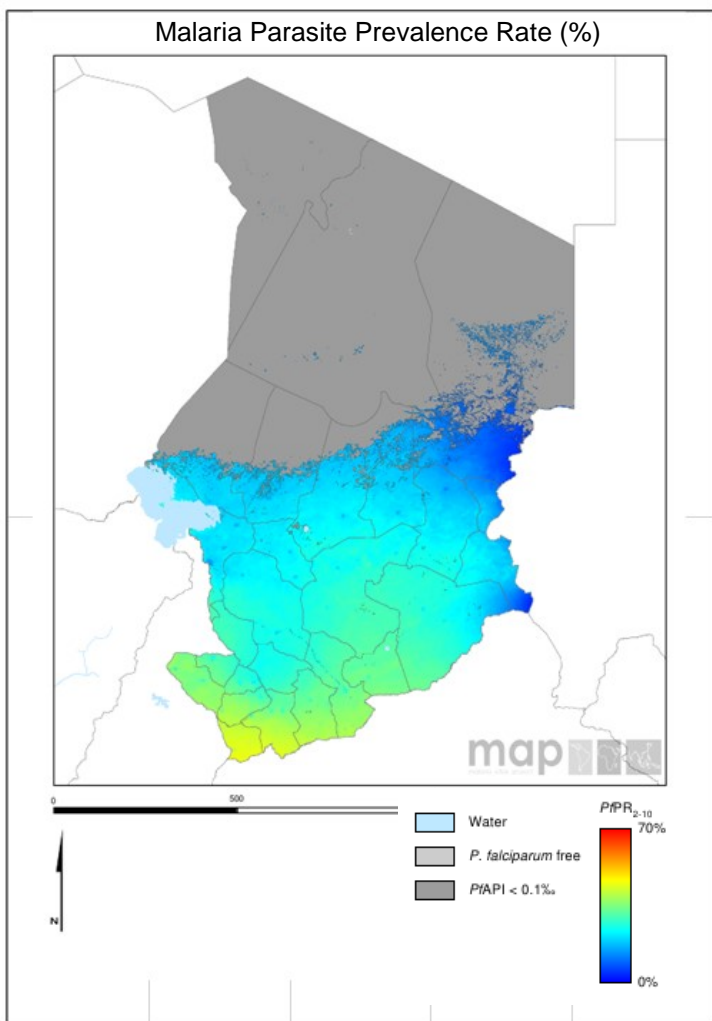


Scorecard for Accountability and Action



Malaria transmission in Chad is intense in the south of the country. The annual reported number of malaria cases in 2013 was 1,272,841 with 1,881 deaths.

Metrics

Policy and Financial Control	
Oral Artemisinin Based Monotherapy Ban status (2015)	Target achieved or on track
Community case management (Pneumonia)(2015)	Target achieved or on track
Community case management (Malaria)(2015)	Target achieved or on track
World Bank rating on public sector mgmt and institutions 2013 (CPIA Cluster D)	2.4
Commodities Financed, Implementation and Malaria Impact	
LLIN financing 2015 projection (% of need)	100
Public sector RDT financing 2015 projection (% of need)	57
Public sector ACT financing 2015 projection (% of need)	91
Operational LLIN/IRS coverage (% of at risk population)	100
On track in 2013 to Reduce Malaria Incidence by >75% by 2015 (vs 2000)	No data/Not applicable
Tracer Indicators for Maternal and Child Health	
PMTCT coverage 2013 (% pregnant HIV pts receiving ARVs)	19
% deliveries assisted by skilled birth attendant	23
Exclusive breastfeeding (% children < 6 months)	3
Vitamin A Coverage 2012 (2 doses)	No data/Not applicable
DPT3 coverage 2013 (vaccination among 12-23 month olds)	48
Postnatal care (within 48 hrs)	No data/Not applicable

Key

Target achieved or on track
Progress but more effort required
Not on track
No data/Not applicable

### **Progress**

Chad has banned oral artemisinin-based monotherapies and has introduced a policy on Community Case Management of malaria and pneumonia. Chad has secured resources to meet the majority of the LLIN and public sector ACT needs for 2015. Additionally the country has procured sufficient LLINs to achieve universal coverage. The country has significantly enhanced the tracking and accountability mechanisms with the development of a Reproductive, Maternal, Newborn and Child Health Scorecard. Chad was awarded a 2015 ALMA Award for Excellence in Implementation of Vector Control.

### **Impact**

The annual reported number of malaria cases in 2013 was 1,272,841 with 1,881 deaths.

### **Key Challenge**

- Weak health information system.

### **Recommended Actions**

Chad has responded positively to the recommended actions addressing low coverage of PMTCT, skilled birth attendants and exclusive breastfeeding and lack of data for postnatal care and vitamin A and continues to track progress as these actions are implemented.