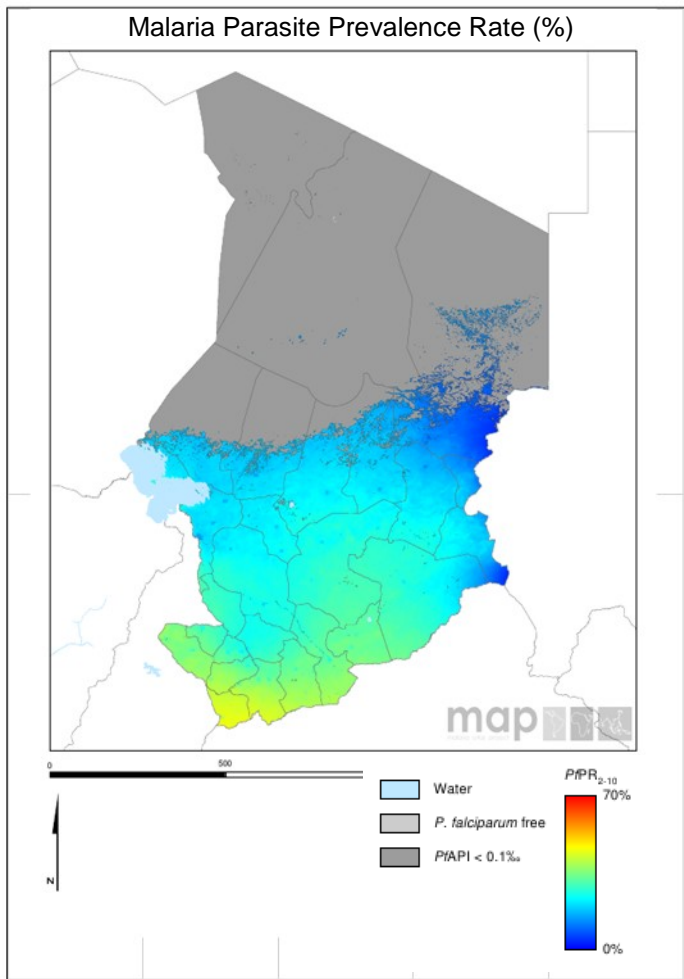


Scorecard for Accountability and Action



Malaria transmission in Chad is intense in the south of the country. The annual reported number of malaria cases in 2014 was 1,513,772 with 1,720 deaths.

Metrics

Commodities Financed and Financial Control	
LLIN financing 2016 projection (% of need)	78
Public sector RDT financing 2016 projection (% of need)	61
Public sector ACT financing 2016 projection (% of need)	50
World Bank rating on public sector management and institutions 2014 (CPIA Cluster D)	2.6
Insecticide Resistance Monitoring, Implementation and Impact	
Insecticide classes with mosquito resistance in representative sentinel sites confirmed since 2010	2
Insecticide resistance monitored since 2014 and data reported to WHO	
National Insecticide Resistance Monitoring and Management Plan	
Scale of Implementation of iCCM (2013)	
Operational LLIN/IRS coverage (% of at risk population)	89
>75% Decrease in Malaria Incidence Projected 2000–2015	
Tracer Indicators for Maternal and Child Health	
Estimated % of Total Population living with HIV who have access to antiretroviral therapy (2014)	23
Estimated % of children (0–14 years old) living with HIV who have access to antiretroviral therapy (2014)	8
% deliveries assisted by skilled birth attendant	34
Postnatal care (within 48 hrs)	15
Exclusive breastfeeding (% children < 6 months)	1
Vitamin A Coverage 2013 (2 doses)	91
DP T3 coverage 2014 (vaccination among 12-23 month olds)	46

Key

<span style="background-color: #90EE90; border: 1px solid black; display: inline-block; width: 15px; height: 10px;"></span>	Target achieved or on track
<span style="background-color: #FFFF00; border: 1px solid black; display: inline-block; width: 15px; height: 10px;"></span>	Progress but more effort required
<span style="background-color: #FF0000; border: 1px solid black; display: inline-block; width: 15px; height: 10px;"></span>	Not on track
<span style="background-color: #808080; border: 1px solid black; display: inline-block; width: 15px; height: 10px;"></span>	No data/Not applicable

## Malaria

### Progress

Chad has carried out insecticide resistance monitoring since 2014 and has reported the results to WHO. The country has also scaled up iCCM implementation.

### Impact

The annual reported number of malaria cases in 2014 was 1,513,772 with 1,720 deaths. WHO, through modeling, estimates that there has been a less than 50% decrease in malaria incidence between 2000 and 2015.

### Key Challenge

- Weak health information system.

### New Key Recommended Action

Objective	Action Item	Suggested completion timeframe
Vector Control	Given the reported mosquito resistance to 2 classes of insecticide, urgently finalise and implement the national insecticide resistance monitoring and management plan	Q1 2017

## MNCH

### Progress

Chad has achieved high coverage in the tracer MNCH intervention, vitamin A coverage. The country has significantly enhanced the tracking and accountability mechanisms with the development of a Reproductive, Maternal, Newborn and Child Health Scorecard.

### Previous Recommended Actions

Chad has responded positively to the MNCH recommended actions addressing low coverage of skilled birth attendants, which have since increased coverage. Additionally, the country has also responded positively to the recommended actions for exclusive breastfeeding and the lack of data for postnatal care and continues to track progress as these actions are implemented.

### New Key Recommended Action

Objective	Action Item	Suggested completion timeframe
MNCH <sup>1</sup> : Optimise quality of care	Work to accelerate coverage of ARTs in children under 14 years of age	Q1 2017

<sup>1</sup> MNCH metrics, recommended actions and response tracked through WHO MCA