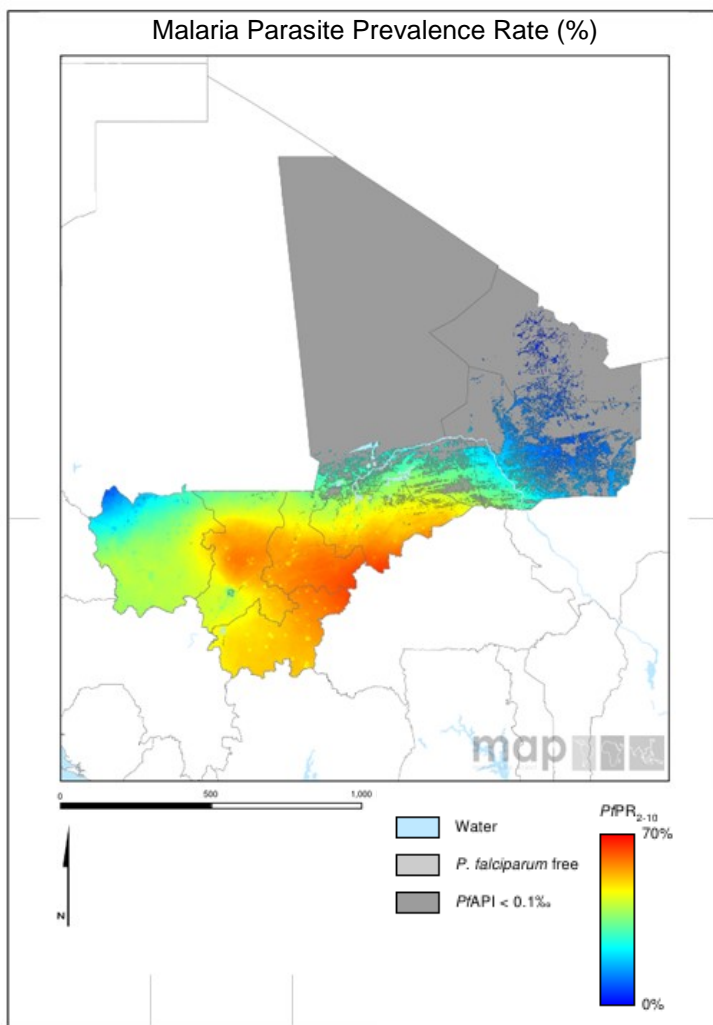


Scorecard for Accountability and Action



Malaria transmission is more intense in the south of Mali. The annual reported number of malaria cases in 2013 was 2,327,385 with 1,680 deaths.

Metrics

Policy and Financial Control		
Oral Artemisinin Based Monotherapy Ban status (2015)		
Community case management (Pneumonia)(2015)		
Community case management (Malaria)(2015)		
World Bank rating on public sector mgmt and institutions 2013 (CPIA Cluster D)		3.0
Commodities Financed, Implementation and Malaria Impact		
LLIN financing 2015 projection (% of need)		100
Public sector RDT financing 2015 projection (% of need)		100
Public sector ACT financing 2015 projection (% of need)		100
Operational LLIN/IRS coverage (% of at risk population)		100
On track in 2013 to Reduce Malaria Incidence by >75% by 2015 (vs 2000)		
Tracer Indicators for Maternal and Child Health		
PMTCT coverage 2013 (% pregnant HIV pts receiving ARVs)		29
% deliveries assisted by skilled birth attendant		59
Exclusive breastfeeding (% children < 6 months)		33
Vitamin A Coverage 2012 (2 doses)		93
DPT3 coverage 2013 (vaccination among 12-23 month olds)		74
Postnatal care (within 48 hrs)		40

Key

	Target achieved or on track
	Progress but more effort required
	Not on track
	No data/Not applicable

Mali ALMA Quarterly Report Quarter Two, 2015



Progress

Mali has banned oral artemisinin-based monotherapies and has introduced a policy on Community Case Management of pneumonia and more recently, malaria. The malaria commodities required to achieve and sustain universal coverage in 2015 are financed and Mali has procured sufficient LLINs to achieve universal coverage. The country has achieved high coverage in the tracer MNCH intervention for vitamin A. Mali has significantly enhanced the tracking and accountability mechanisms with the development of a Reproductive, Maternal, Newborn and Child Health Scorecard.

Impact

The annual reported number of malaria cases in 2013 was 2,327,385 with 1,680 deaths.

Key Challenge

- The lack of new resources allocated to malaria in the GF New Funding Model jeopardises the country's ability to sustain the impressive gains made in the fight against malaria.

Previous Key Recommended Actions

Objective	Action Item	Suggested completion timeframe	Progress	Comments - key activities/accomplishments since last quarterly report
Address funding	Ensure that GF resources are allocated to malaria control at a level that is sufficient to sustain the gains made in recent years	Q4 2014		Mali submitted the GF New Funding Model concept note in April 2015

Mali has responded positively to the recommended actions addressing low coverage of exclusive breastfeeding and PMTCT, and continues to track progress as these actions are implemented.

Key

	Action achieved
	Some progress
	No progress
	Deliverable not yet due