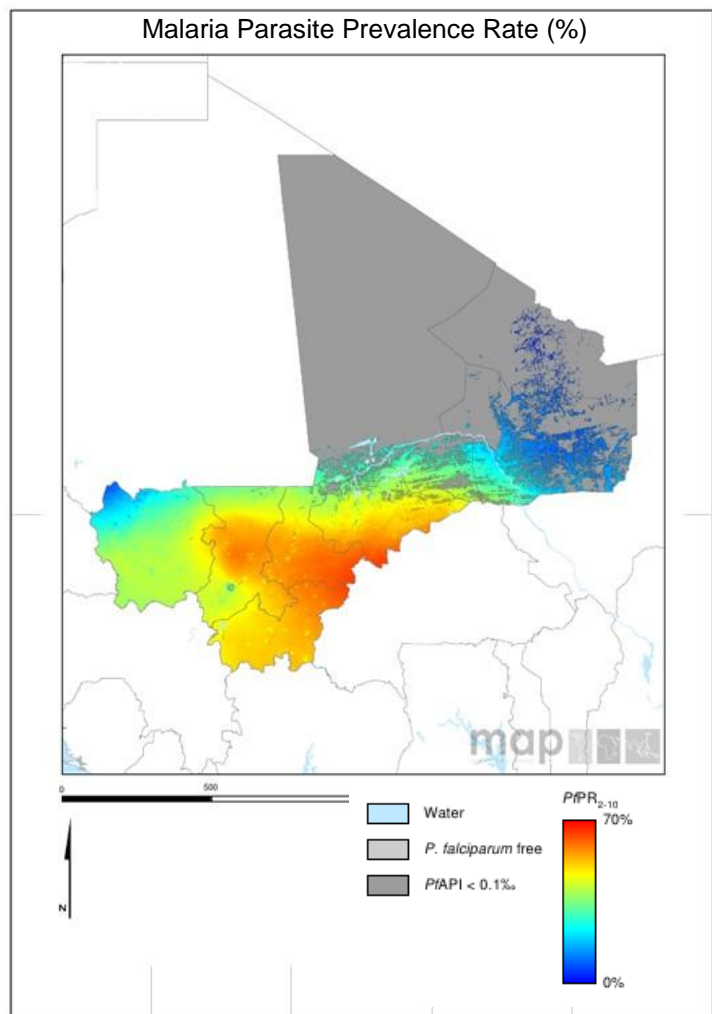


Scorecard for Accountability and Action



Malaria transmission is more intense in the south of Mali. The annual reported number of malaria cases in 2014 was 2,590,643 with 2,309 deaths.

Metrics

Commodities Financed and Financial Control		
LLIN financing 2016 projection (% of need)	100	Target achieved or on track
Public sector RDT financing 2016 projection (% of need)	100	Target achieved or on track
Public sector ACT financing 2016 projection (% of need)	100	Target achieved or on track
World Bank rating on public sector management and institutions 2014 (CPIA Cluster D)	3.0	Progress but more effort required
Insecticide Resistance Monitoring, Implementation and Impact		
Insecticide classes with mosquito resistance in representative sentinel sites confirmed since 2010	4	Not on track
Insecticide resistance monitored since 2014 and data reported to WHO		Target achieved or on track
National Insecticide Resistance Monitoring and Management Plan		No data/Not applicable
Scale of Implementation of iCCM (2013)		Progress but more effort required
Operational LLINIRS coverage (% of at risk population)	100	Target achieved or on track
>75% Decrease in Malaria Incidence Projected 2000–2015		Not on track
Tracer Indicators for Maternal and Child Health		
Estimated % of Total Population living with HIV who have access to antiretroviral therapy (2015)	28	Not on track
Estimated % of children (0–14 years old) living with HIV who have access to antiretroviral therapy (2015)	23	Not on track
% deliveries assisted by skilled birth attendant	59	Progress but more effort required
Postnatal care (within 48 hrs)	40	Progress but more effort required
Exclusive breastfeeding (% children < 6 months)	33	Not on track
Vitamin A Coverage 2013 (2 doses)	98	Target achieved or on track
DPT3 coverage 2014 (vaccination among 0-11 month olds)	77	Progress but more effort required

Key

Target achieved or on track
Progress but more effort required
Not on track
No data/Not applicable

Mali ALMA Quarterly Report Quarter Two, 2016



Malaria

Progress

Mali has carried out insecticide resistance monitoring since 2014 and has reported the results to WHO. The malaria commodities required to achieve and sustain universal coverage in 2016 are financed and Mali has procured sufficient LLINs to achieve operational universal coverage. The country has carried out insecticide resistance monitoring since 2014 and has reported the results to WHO. Mali was awarded a 2016 ALMA Award for Excellence for being the Most Improved in Malaria Control between 2011 and 2015.

Impact

The annual reported number of malaria cases in 2014 was 2,590,643 with 2,309 deaths. WHO, through modeling, estimates that there has been a less than 50% decrease in malaria incidence between 2000 and 2015.

Previous Key Recommended Action

Objective	Action Item	Suggested completion timeframe	Progress	Comments - key activities/accomplishments since last quarterly report
Vector Control	Share the status of the national insecticide resistance monitoring and management plan with WHO	Q1 2017		Deliverable not yet due

MNCH

Progress

Mali has achieved high coverage in the tracer MNCH intervention for vitamin A. Mali has significantly enhanced the tracking and accountability mechanisms with the development of a Reproductive, Maternal, Newborn and Child Health Scorecard.





Previous Key Recommended Actions

Objective	Action Item	Suggested completion timeframe	Progress	Comments - key activities/accomplishments since last quarterly report
MNCH ¹ : Optimise quality of care	Work to accelerate coverage of ARTs especially in children under 14 years of age	Q1 2017		Deliverable not yet due but Mali has increased ART coverage by 2% in the total population and by 3% in children

Mali has responded positively to the MNCH recommended action addressing low coverage of exclusive breastfeeding and continues to track progress as this action is implemented.

¹ MNCH metrics, recommended actions and response tracked through WHO MCA

Key

	Action achieved
	Some progress
	No progress
	Deliverable not yet due